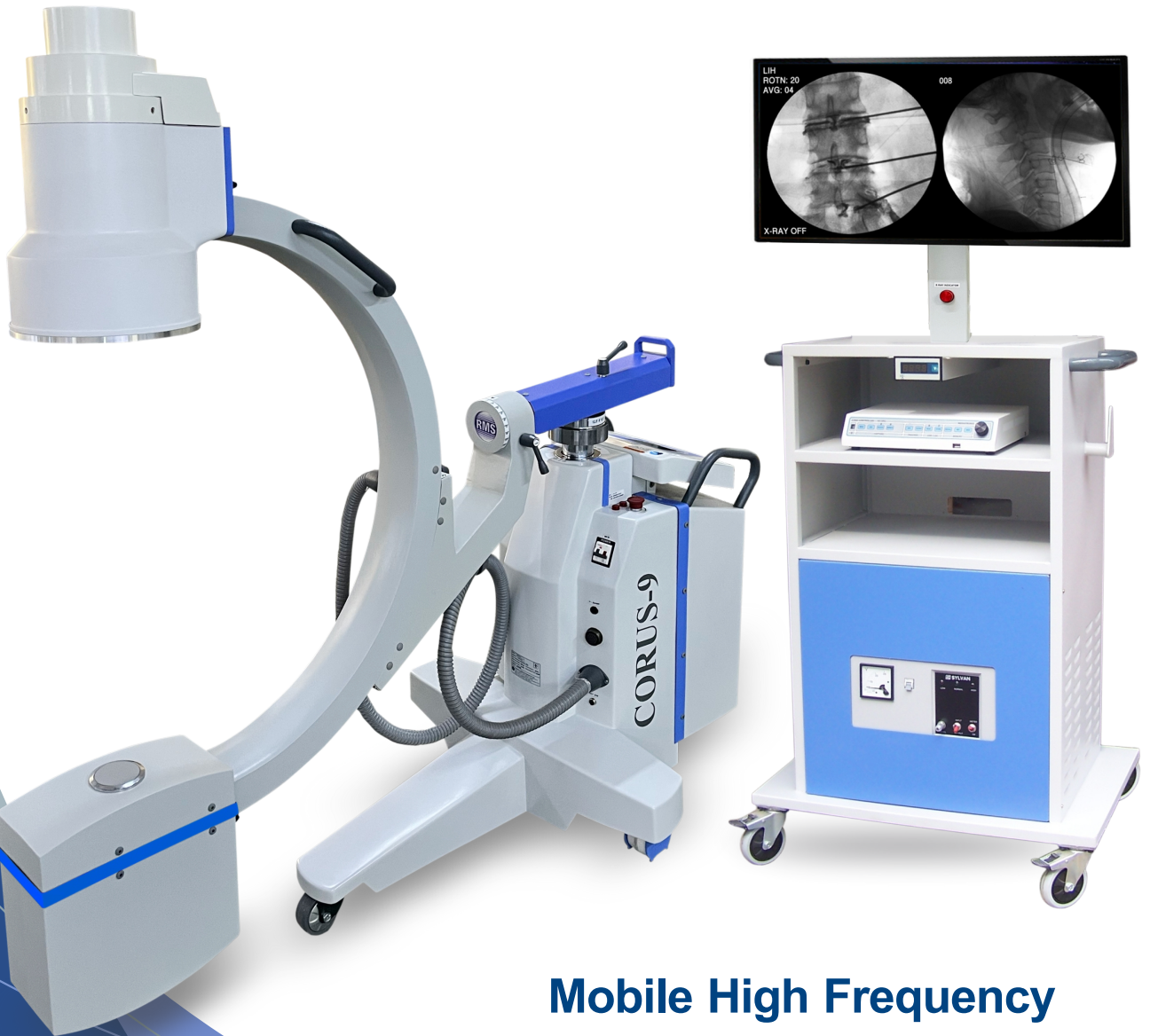




Corus 9 HD



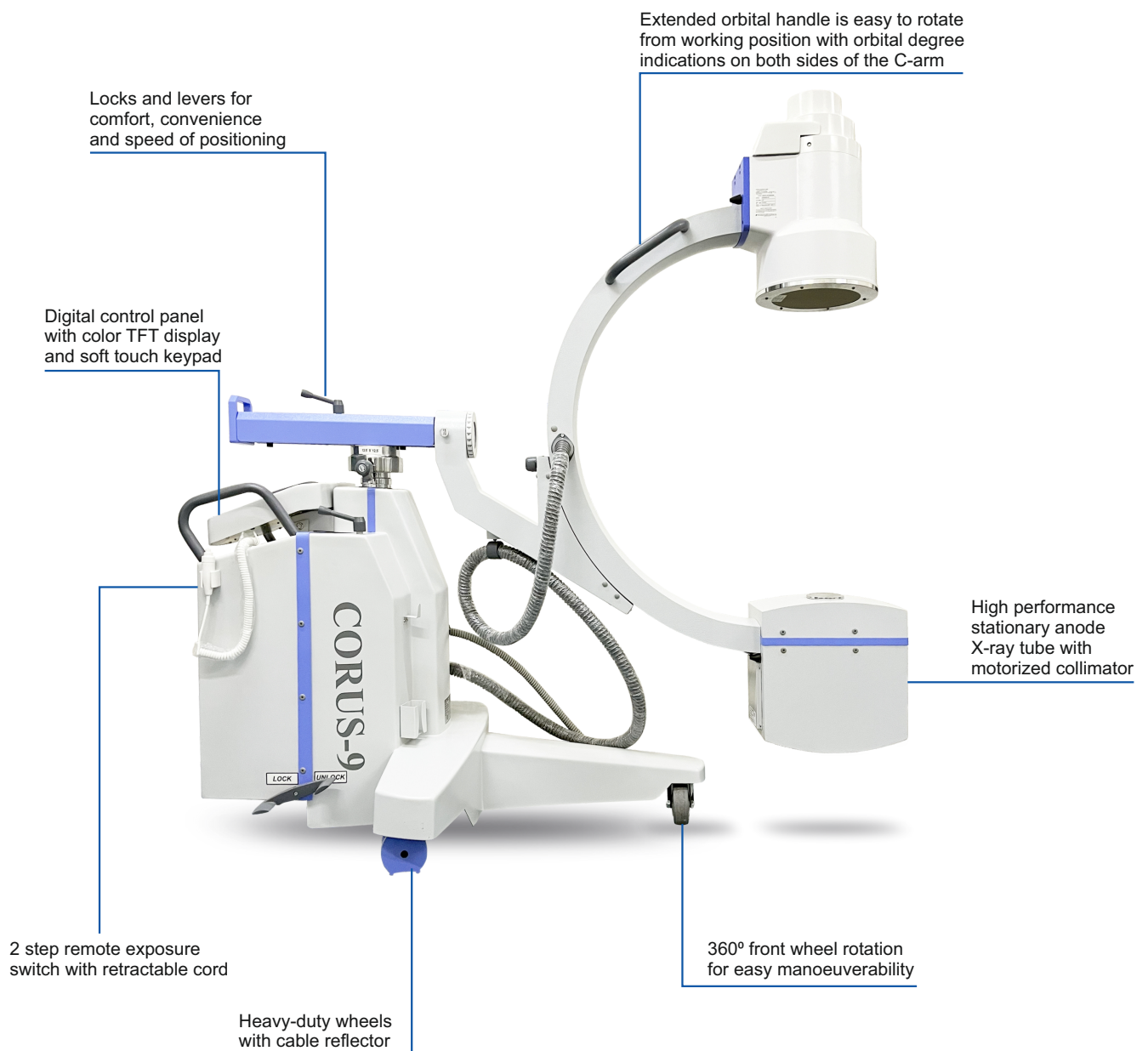
Mobile High Frequency
with HD image quality

HD IMAGING

Improved clinical applications

Corus 9 HD incorporate high frequency inverter based X-ray generation with excellent image quality and reduced stray radiation to the patient and operator

- Professional storage system for single and continuous images, reducing the repeatability of the exposure
- Small footprint fits easily in a small work space
- Reliable 9" image intensifier technology
- Compact and lightweight design makes for easy maneuvering and positioning
- Smart system operation with push button interface
- Time savings with inbuilt APR system
- High resolution 32" Full HD Ultrawide LED Monitor

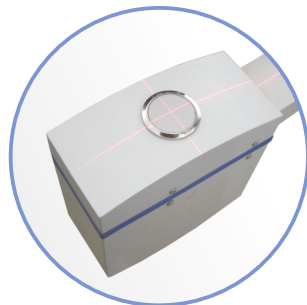
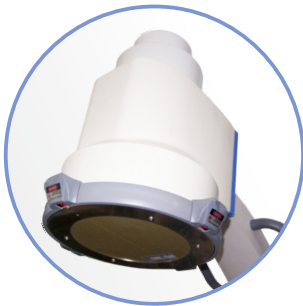


Mobile Surgical Fluoroscopic X-ray System



Digital Console with Colour display

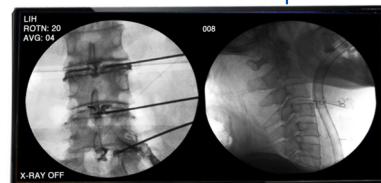
Versatility to Perform Extremity Procedures



Laser Aimer

Laser based Aiming tool that provides guided positioning of C-Arm through a Sharp Cross Hair Laser Mark to reduce the exposure for doctor and patient

High resolution 32" Full HD Ultrawide LED Monitor



X-ray mode indicator

Handles for easy mobility

Light weight design for comfortable movement



Cours 9 HD - Technical Specifications

X-ray Generator

Type	40 kHz, High frequency
Output	3.5 KW
Fluoro/ Radio KV	40-110 KVP with 1 KV / step
Fluoro mA	0.1-3 mA
Radiographic mAs	0.4 to 200 mAs (optional)
Radiographic mA	20 to 80 mA (optional)
Radio Timer	Upto 5 sec
Fluoro Timer	300 sec cumulative
Fluoro Timer Alarm	Graded intermittent beep alarms
Fluoro selection	Continuous, single pulse, multi pulse
HD mode	upto 8 mA (optional)

C-arm Mechanical

Arc Orbital movement	125°
Axial Rotation	±180°
Horizontal Movement	210 mm
Vertical Movement	410 mm (motorized)
Swivel Range	±12.5°
SID	942 mm
Clearance	775 mm
Arc-Depth	612 mm
Lateral Movement	Steering Handle
Locking Mechanism	Locks for all the manual movements of C-arm
Emergency Switch	Shutdown entire machine operations

Tube Head

Type	Monoblock with Stationary Anode
Dual Focal Spots	Small-0.6 mm ² Large-1.5 mm ²
Thermal Protection	Auto cut-off
Collimator	Fixed

Trolley For Monitor, Image Memory and Servo Voltage Stabilizer.

Power Supply 230 Volts AC ±10V, 50 HZ. Single Phase, 15A ±10% Regulation with independent earthing, line resistance < 0.4 ohms

HD Imaging System

CCD Camera	½" B/W CCD HD Camera with optics
Image Memory	100 Frames 720p HD image memory with LIH, Negative Image, Contrast adjustment, Image Rotation, Image Mirror
Monitors	32" HD LED Monitor with Auto Clean, Active Back-light control and contrast booster with A/V port
Others	Self Diagnostic Program USB memory stick (pen drive)

Optional Slave Monitor, Iris or Parallel Collimators, Covers (Tube Head, II and Console) and WiFi connectivity

Control Display

Type	Graphical colored TFT display
APR mode	Present
Size	5.7"
Parameters	To display all Fluoro and Radiographic parameters viz. KV, FmA, time and other indicators
Tube Temperature	Realtime temperature display on screen

Since R&D is a continuous process, to make changes in product features, specifications, aesthetics and/or to discontinue the same at any time without notice or obligation

Certified AERB, ISO 9001:2015, EN ISO 13485:2016 company 
Recorders & Medicare Systems (P) Ltd.

Plot No. 11, HSIIDC IT Park, Sector 22, Panchkula - 134114, Haryana, India
Ph.: +91-172-2564196, 2565196, Toll Free: 1800-1200-767,
www.rmsindia.com, sales@rmsindia.com

Unit II: Plot No. 197, Industrial Area, Phase 1, Panchkula - 134113, Haryana, India